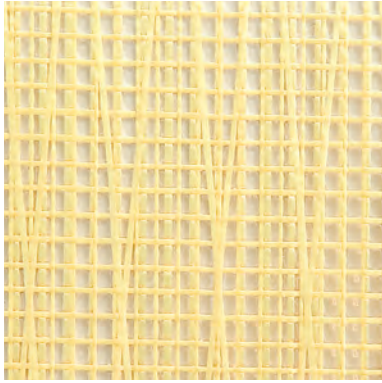


# Radial Laminate Sails

## Radial Aramid Laminates (RAL)



Our Aramid Racing Laminate (RAL) is ideal for racing applications up to 55 feet.

Construction is a film on film laminate with Aramid warp and fill fibres coupled with a 22° black Aramid scrim which reduces the film loading and stabilises the bias. This combination provides the ultimate in low stretch, light weight and cost effectiveness.

The material is especially useful for # 2 and # 3 headsails as a cost effective alternative to a strung membrane Sail.

### RAL Specifications

Code	Film	Warp	Warp Fibres overlaid in Aramid	Fill	22° Aramid X Scrim	Warp DPI	Film	Cloth Weight		Cloth Width	
								SM oz	gsm	mms	Inch
RAL - 200	½ mil 12 micron	Aramid 1000 denier 6 per inch	Aramid 1140 denier 5 per inch	Aramid 1000 denier 5 per inch	1000 Denier 2 x 2 per inch	11700	½ mil 12 micron	4.8	200	1372	54
RAL - 250	½ mil 12 micron	Aramid 1000 denier 6 per inch	Aramid 1140 denier 10 per inch	Aramid 1000 denier 5 per inch	1000 Denier 2 x 2 per inch	17400	½ mil 12 micron	6	250	1372	54
RAL - 300	½ mil 12 micron	Aramid 1000 denier 7 per inch	Aramid 1140 denier 12 per inch	Aramid 1000 denier 7 per inch	1000 Denier 2 x 2 per inch	20680	½ mil 12 micron	7	300	1372	54

### RAL Application Chart

Boat Length		Mainsail	Headsails			
ft	m		# 1 Light	# 1 Medium - Heavy	# 2	# 3
20 - 25	6.0 - 7.5	200	200	200	200	200
25 - 30	7.5 - 9.0	200	200	200	200	250
30 - 35	9.0 - 10.5	250	200	200	200	250
35 - 40	10.5 - 12	250	200	250	250	250
40 - 45	12 - 14	300	250	250	250	300



### Conversion Chart from Dimension Polyant X - Tech to RAL Codes

DP Code	RAL - Code
X 10	RAL - 200
X 15	RAL - 250
X 20	RAL - 300

